

Design Software for Busy Engineers

The Power of Simplicity

RoadEng® is a powerful, easy to use road design software package. It works either as a companion to other civil design software or as an independent standalone system. It includes functions for data collection, terrain modeling, contouring, volumes, profiles, sections and road design.

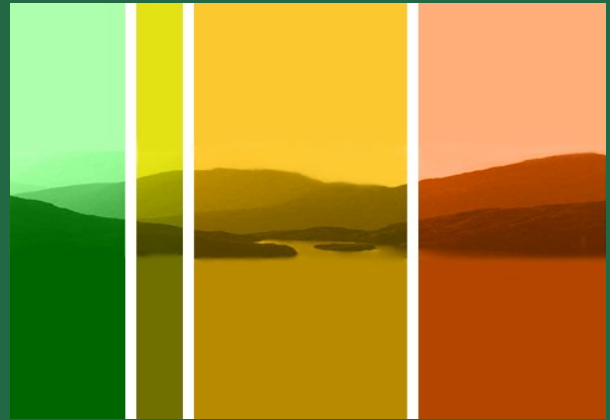
Operating as a standalone program in Microsoft Windows, RoadEng allows you to interactively design a road. It consists of plan, profile, section, reporting, and 3D windows. Changes made in one window are instantaneously reflected in adjoining windows.

Too Busy for Software?

When we talk to engineers, we often hear "There just isn't enough hours in a day. We're pulled in many directions. We'd like to be more involved with the engineering design but we just can't afford the time to learn the software. We pass it on to a CAD technician or outside consultant".

If this sounds familiar, you're not alone. Today the use of design software is largely restricted to computer specialists and CAD technicians. This is due to the complexity of CAD based design software packages. Civil engineers are becoming increasingly separated from the tools, which enable them to make better engineering decisions. Many are working on paper or "standing over the shoulder" of the CAD technician during the design cycle. This methodology is inefficient. It limits the engineer's ability to try alternate designs.

RoadEng® fills this gap by providing engineers and technicians with a 'quick and easy' design tool.



"PND selected Softree due to its user friendly graphical interface and its ability to have the profile, plan, section and mass haul windows open all at the same time. The learning curve was fast on the program and the end result was a road design that required less time to prepare than thought possible while accurately tracking quantities in real time."

*Gary Watters, P.E.
Senior Engineer
PND Incorporated, Consulting Engineers*





"We were looking for a software package which was compatible with AutoCAD and was easy to use. We have been very pleased with RoadEng and Softree's phone assistance has been very helpful."

*Mark Guerette T.T.
Civil Engineering Technologist
Transportation Department
Sturgeon County, Alberta*



Prior to purchasing RoadEng in August 2007 Koochiching County had struggled unsuccessfully with AutoCAD® Civil 3D.

"We are very pleased with this software. The learning curve was very short. What we like most is that it's very simple to use.

I was getting volumes for stockpiles in minutes. It is also very easy to create a custom road template and custom cross section sheets."

*Eric Norstad
Sr. Tech.
Koochiching County Highway. Dept.
Koochiching Minnesota*

Drafting vs. Engineering

In many organizations, a dedicated CAD technician (draftsman) does much of the engineering design due to the steep learning curve for CAD based software. In addition to the initial learning curve, an engineer must regularly use CAD software to remain proficient. This is a problem for busy engineers who have a variety of responsibilities such as meetings, client negotiations, construction supervision, administration and reporting etc.

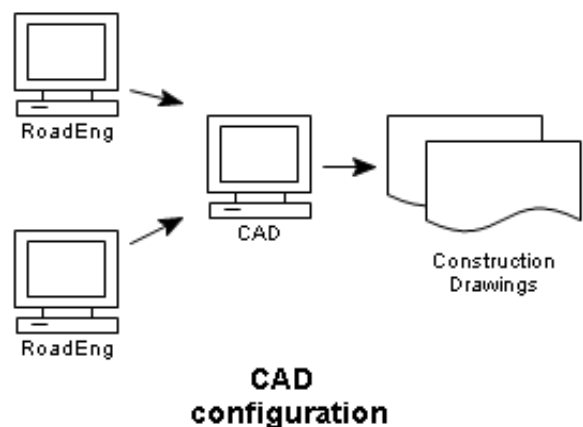
Without the CAD overhead, RoadEng focuses on engineering and is the ideal tool for occasional users. It was designed from the ground up to work with objects such as surfaces, cross sections, alignments, drainage structures, and templates. Its interactive capabilities allow the engineer to quickly evaluate different design situations.

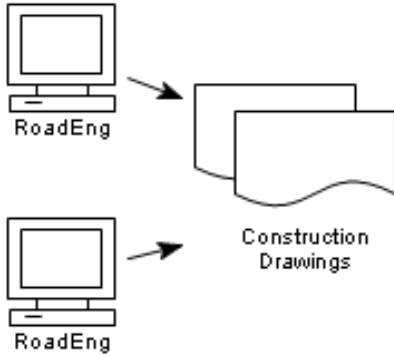
Compatibility

RoadEng integrates well in the modern engineering office. It is a clean, simple standalone package which allows information to be moved seamlessly between other applications such as Microsoft Office®, AutoCAD® and ArcView®.

RoadEng can be deployed completely by itself or as a companion to other civil/survey software such as Civil 3D®, Land Desktop®, CaiCe, EaglePoint or InRoads®.

RoadEng® supports industry standard file formats such as DWG and LandXML.





Stand alone configuration

Cost Savings

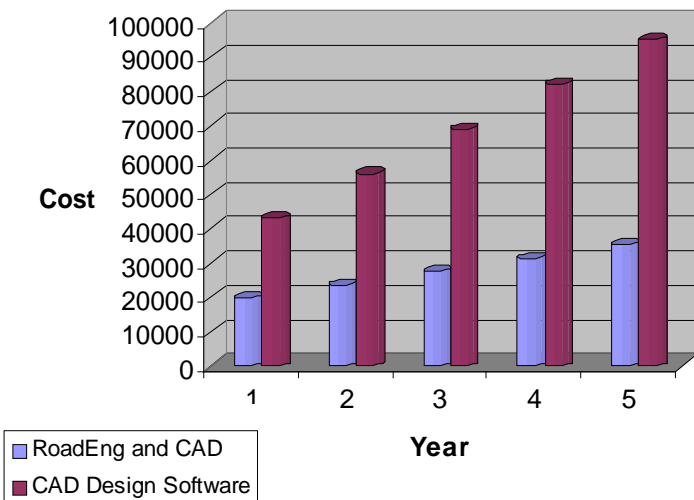
RoadEng offers significant and tangible savings over competitive products in the following areas:

- Initial licensing/acquisition cost.
- Ongoing support costs.
- Initial and ongoing training cost.

In addition to the above, there are demonstrated savings in improved efficiency and reduced downtime or lost opportunity due to training, familiarization etc.

Based on an engineering office of 4 designers (3 engineers and a CAD tech), a cost savings over a 5 year period of 115,000\$ could be expected.

The table below shows the total cost of ownership of a CAD based design solution vs. a RoadEng solution.



Civil Design Software Ownership Cost



In April 2006, Canadian Projects Limited purchased RoadEng Civil Engineer to compliment their existing Civil 3D software.

"We really like the ease of use of RoadEng, it lets us try a variety of alignment options and quickly provides us with material quantities differences"
"The software is relatively easy to use, with minimal time invested in learning and maximum time spent on design optimization."

*Travis Peterson,
 Canadian Projects Limited
 Calgary, Alberta*



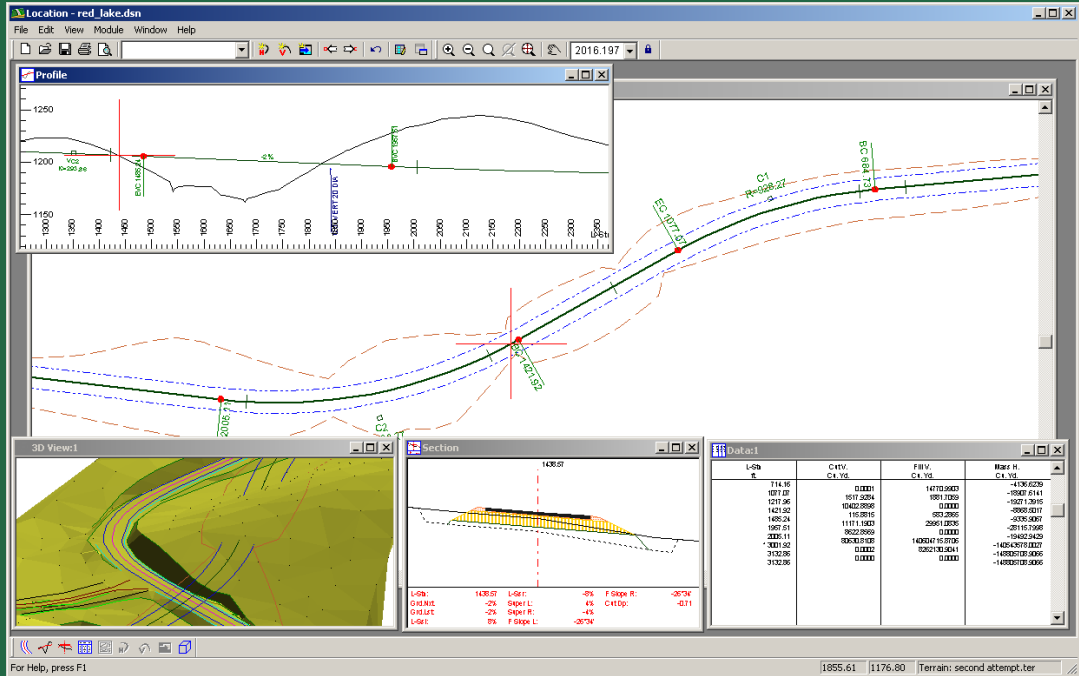
"In Mahnomen County, our problem has been finding a road design software package that is simple enough for our technicians to learn and retain after a season of being in the field, also powerful enough to do the things that we need to accomplish. We tried the Softree RoadEng program and are currently starting our third year using the program.

Our Engineering Technicians find it easy to learn and use, and the quantities generated by the program have been very accurate. I would definitely recommend Softree software to anyone looking for a user friendly design package."

*Jonathan Large, P.E.
 County Engineer
 Mahnomen County, Minnesota MN*

RoadEng®

- ✓ Ideal for transportation road projects.
- ✓ Easy to use!
More than 90% of our customers don't require training.
- ✓ Focused tool for road design.
- ✓ Compatible with AutoCAD®
- ✓ Significant up front and ongoing cost savings.



RoadEng®
the easiest design
software you'll
ever use.

call toll free
866-519-6222
or visit us at
www.softree.com

